

RESEARCH

Open Access



Increased stress hyperglycemia ratio at hospital admission in stroke patients are associated with increased in-hospital mortality and length of stay

Di Shen^{1,2,3,4†}, Xintian Cai^{1,2,3,4†}, Qing Zhu^{1,2,3,4}, Mulalibieke Heizhati^{1,2,3,4}, Junli Hu^{1,2,3,4}, Shuaiwei Song^{1,2,3,4}, Wenbo Yang^{1,2,3,4}, Jing Hong^{1,2,3,4} and Nanfang Li^{1,2,3,4*}

Abstract

Objective Recently, the stress hyperglycemia ratio (SHR) has been introduced as a metric to signify relative hyperglycemia. This study aimed to investigate the relationship between SHR and in-hospital mortality and length of stay occurring during hospitalization in stroke patients.

Methods The retrospective cohort study comprised a total of 4,018 patients diagnosed with acute stroke. The SHR is expressed by the formula: $SHR = ABG \text{ (mmol/L)} / [1.59 \times HbA1c \text{ (\%)} - 2.59]$. Outcomes included in-hospital mortality and length of stay. Multivariable logistic and linear regression analyses were conducted. Receiver operating characteristic (ROC) analysis was performed to distinguish between the variables, and the area under the ROC curve (AUC) was compared.

Results In this analysis, a total of 4,018 individuals participated, including 2,814 male patients, accounting for 70.0%. Overall, in-hospital mortality and length of stay tended to rise as SHR increased. A higher prevalence of in-hospital mortality was observed with each standard deviation (SD) increase of the SHR (odds ratio [OR]: 1.26, 95% confidence interval [CI]: 1.05–1.52). Moreover, after considering the confounders, a significant positive association between SHR levels and length of stay was observed ($\beta = 0.70$, 95% CI: 0.40–1.00). ROC analysis showed that among stroke patients, SHR (AUC = 0.693) was more effective than admission blood glucose (ABG) (AUC = 0.646) and glycosylated hemoglobin (HbA1c) (AUC = 0.523), which were more predictive of in-hospital mortality.

Conclusions Elevated SHR levels are associated with increased in-hospital mortality and prolonged length of stay in stroke patients.

Keywords Stroke, Stress hyperglycemia ratio, In-hospital mortality, Length of stay

[†]Di Shen and Xintian Cai contributed equally to this work.

*Correspondence:

Nanfang Li
lnanfang2016@sina.com

¹Hypertension Center of People's Hospital of Xinjiang Uygur Autonomous Region, Xinjiang Hypertension Institute, Urumqi, Xinjiang 830001, People's Republic of China

²NHC Key Laboratory of Hypertension Clinical Research, Urumqi, Xinjiang 830001, People's Republic of China

³Key Laboratory of Xinjiang Uygur Autonomous Region "Hypertension Research Laboratory", Urumqi, Xinjiang 830001, People's Republic of China

⁴Xinjiang Clinical Medical Research Center for Hypertension (Cardio-Cerebrovascular) Diseases, Urumqi, Xinjiang 830001, People's Republic of China



© The Author(s) 2024. **Open Access** This article is licensed under a Creative Commons Attribution 4.0 International License, which permits use, sharing, adaptation, distribution and reproduction in any medium or format, as long as you give appropriate credit to the original author(s) and the source, provide a link to the Creative Commons licence, and indicate if changes were made. The images or other third party material in this article are included in the article's Creative Commons licence, unless indicated otherwise in a credit line to the material. If material is not included in the article's Creative Commons licence and your intended use is not permitted by statutory regulation or exceeds the permitted use, you will need to obtain permission directly from the copyright holder. To view a copy of this licence, visit <http://creativecommons.org/licenses/by/4.0/>. The Creative Commons Public Domain Dedication waiver (<http://creativecommons.org/publicdomain/zero/1.0/>) applies to the data made available in this article, unless otherwise stated in a credit line to the data.

Introduction

With high rates of disability and mortality, stroke is the primary common cause of adult disability and mortality in China [1, 2]. Given the current large demographic changes in China and the changing prevalence of vascular risk factors, it is expected that the mortality rate from stroke would rise sharply in the coming decades [3, 4]. The mortality rate of stroke patients in hospitals is high, and the length of stay is increasing. Therefore, it is crucial to carry out effective risk stratification for stroke patients in the hospital, establish optimal management strategies, and achieve accurate treatment [5, 6].

Stress hyperglycemia affects a significant proportion of stroke patients [7]. A rise in blood glucose levels has been noted in the acute phase of stroke. Stress hormones are released following activation of the sympathetic nervous system and the hypothalamus-pituitary-adrenal axis, causing this rise [8]. Previous research suggests that persistent hyperglycemia is associated with more adverse outcomes in stroke incidents [9]. Studies have shown that glycosylated hemoglobin (HbA1c) level was an independent predictor of worse functional outcome in patients with acute anterior circulation ischemic stroke (IS) [10, 11]. Persistent hyperglycemia has been linked to worse outcomes from strokes, according to prior study [9]. On the other hand, acute stress reactivity or persistent hyperglycemia may be the cause of increased glucose levels at the time of hospital admission [12]. To address this issue, a novel marker that more precisely reflects acute hyperglycemia has been created: the stress hyperglycemia ratio (SHR). The chronic glycemic value, which is determined using glycosylated hemoglobin (HbA1c), and the acute admission blood glucose (ABG) are the basis for estimating the SHR [13, 14]. Research indicates a significant independent correlation between SHR and adverse long-term outcomes in non-obstructive coronary artery patients [14]. Research has shed light on the influence of SHR on initial neurological impairments and the future outcomes for patients with acute IS [15]. Further research indicates that SHR serves as a reliable predictor of early hematoma growth and adverse outcomes in patients experiencing intracerebral hemorrhage [16]. SHR is suggested as a promising indicator for predicting unfavorable outcomes in critically ill patients by assessing the extent of stress-induced hyperglycemia in relation to the severity of illness [17]. However, the prognosis of patients with SHR and all types of stroke remains unclear. In addition, previous studies have limited attention given to the association between SHR and length of stay. Burdening society by prolonging hospitalization, which further increases the cost of healthcare [18]. However, no study has yet explored the possible connection between SHR and length of stay. Thus, we performed a retrospective analysis to look into the relationship between SHR

and in-hospital mortality as well as the length of stay in patients with stroke.

Materials and methods

Study population

Between January 1, 2015, and December 31, 2022, 10,466 acute stroke patients in total were included in the research. The following were the study's inclusion criteria: (1) age ≥ 18 years; (2) acute stroke [including acute IS and hemorrhagic stroke (HS)] verified by radiological examination [cranial computed tomography (CT) or magnetic resonance imaging (MRI)]. The following were the exclusion criteria: (1) incomplete data pertaining to age, sex, body mass index (BMI), and comorbidities; (2) patients with conditions that affect HbA1c levels, such as renal failure (serum creatinine concentration >180 mmol/L) and anemia (hemoglobin <100 g/L); (3) lack of baseline data for HbA1c or admission glucose levels, or measurements not taken within 24 h of admission; (4) ABG <3.9 mmol/L; (5) patients who were discharged or died within 48 h of admission. Ultimately, 4018 participants were included in the analysis (Figure S1). All patients (or their legal relatives) who participated in the study gave written informed permission, and the study was approved by the hospital's ethics committee. We followed the STROBE statement in reporting this study [19].

Data collection and definition

Baseline data, including clinical information, lifestyle variables, test findings, medical history, and medication history, were taken from the electronic medical record. Clinical data included age, sex, height, weight, BMI, systolic, diastolic, and heart rate at admission. Both smoking and alcohol drinking were classified as current or non-current.

Laboratory indicators include white blood cells (WBC), red blood cells (RBC), hemoglobin (HB), platelets (PLT), alanine aminotransferase (ALT), aspartate aminotransferase (AST), albumin/globulin ratio (A/G), serum creatinine (Scr), uric acid (UA), serum potassium, serum sodium, total cholesterol (TC), triglycerides (TG), high-density lipoprotein cholesterol (HDL-C), low-density lipoprotein cholesterol (LDL-C), and HbA1c. The ABG was defined as the first available plasma glucose measurement within a day after admission. Relative hyperglycemia was determined by the SHR, calculated as the admission blood glucose (ABG) divided by the estimated average glucose [13]. The SHR is expressed by the formula: $SHR = ABG \text{ (mmol/L)} / [1.59 \times HbA1c \text{ (\%)} - 2.59]$ [13]. The above blood biochemical indicators were detected by Automatic Analyzer (7600-010, Hitachi, Tokyo, Japan) according to the manufactures instruction.

The definition of hypertension was a self-reported history of medical diagnosis and antihypertensive drug usage. Dyslipidemia was defined by self-report dyslipidemia and/or treatment with a lipid-lowering drug. In case the participant disclosed a history of diabetes mellitus or used anti-hyperglycemic medication, diabetes mellitus was deemed to be present. The diagnosis of coronary artery disease was based on the patient's self-reported history of myocardial infarction, percutaneous coronary intervention, or coronary bypass grafting. An ischemic or hemorrhagic stroke history was considered a prior stroke.

Outcomes

The outcome measures for this study included the length of stay and in-hospital mortality. Whatever the cause of death, every death that happened while the patient was in the hospital was considered to be an instance of in-hospital mortality. The time from admission to discharge was considered the length of stay. The medical records of stroke patients were identified by trained staff using the International Classification of Diseases, Tenth Revision (ICD-10) codes. The diagnosis and classification of acute stroke were determined based on WHO criteria, in combination with confirmation through brain CT or MRI [20, 21].

Statistical analysis

The χ^2 test was used for categorical variables, and for continuous variables, either ANOVA or the Kruskal-Wallis test was employed.

We calculated the variance inflation factor (VIF) for all covariates (Table S1). Continuous outcomes were analyzed using multivariable linear regression, and binary outcomes were analyzed using multivariable logistic regression. Tests for trend were calculated using the tertile number as a continuous variable. Spearman's correlations were employed to assess the association between the risk factors linked to in-hospital mortality and length of stay and SHR levels as a continuous variable. Restricted cubic spline (RCS) models were fitted for both linear and logistic regression models. To assess potential interactions, stratified analyses were carried out. Sensitivity analyses were employed to test the robustness of the results. Furthermore, the receiver operating characteristics (ROC) curve was plotted to evaluate the predictive utility of SHR for in-hospital mortality compared to ABG and HbA1c. Statistical analysis was performed using R 4.1.1 software. We considered $p < 0.05$ (two sided) as significant.

Results

Baseline characteristics

The baseline parameters for each group, according to the tertiles of SHR, are presented in Table 1. A total of 4018 individuals participated in this analysis, with

2814 male patients (70.0%) included. The incidence of in-hospital mortality and length of stay tended to increase with increasing SHR (Figs. 1 and 2). Overall, the distribution of SHR in the population was normal (Figure S2). Higher levels of SHR were linked to age, sex, current smoking, current drinking, higher BMI, hypertension, and diabetes mellitus. The group with elevated SHR exhibited significantly increased heart rate, SBP, and DBP. In terms of laboratory parameters, WBC, HB, PLT, UA, serum potassium, TC, TG, HDL-C, LDL-C, HbA1c, and ABG increased with SHR (Table 1). To investigate the risk factors associated with the relationship between SHR levels and in-hospital all-cause death and length of stay, we conducted Pearson correlation analysis (Table S2). In this analysis, SBP, DBP, WBC, serum creatinine, TC, TG, HDL-C, HbA1c, and ABG were found to be positively correlated with SHR levels. ABG exhibited the strongest association ($r = 0.739$).

Relationship between SHR and in-hospital mortality

Overall, we found that among stroke patients, elevated SHR was substantially and positively associated with in-hospital mortality. With an odds ratio (OR) of 1.53 (95% CI: 1.32–1.77, $p < 0.001$) in the crude model, SHR levels were substantially linked with in-hospital mortality. After adjusting for confounding factors in the Model 3, SHR remained an independent risk factor for in-hospital mortality, with an OR of 1.26 (95% CI: 1.05–1.52, $p < 0.001$) (Table 2). In both acute IS and acute HS, similar outcomes were seen (Tables S3–S4). After excluding individuals with missing covariates, the association was not materially changed (Table S5). Furthermore, to evaluate the sensitivity to unmeasured confounding, we produced E-values (Table S6 and Figure 3). We further found a significant dose–response relationship between SHR and in-hospital mortality (p for nonlinear association = 0.029) (Fig. 3).

Relationship between SHR and length of stay

Univariate and multivariable-adjusted linear regression models were applied to assess the association between SHR levels and length of stay. In the crude model, SHR levels were substantially correlated with length of stay ($\beta = 0.83$, 95% CI: 0.55–1.12, $p < 0.001$). The fully adjusted model ($\beta = 0.70$, 95% CI: 0.40–1.00, $p = 0.022$) did not change the results (Table 3). Comparable outcomes were found in acute IS and HS (Tables S7–S8). After excluding participants with missing covariates, the results did not significantly alter (Table S9 and Figure S4). In addition, the main results were robust, and we produced E-values to evaluate the sensitivity to unmeasured confounding (Table S10 and Figure S4). After adjustment for multiple covariates, we found a significant dose–response

Table 1 Baseline characteristics according to tertiles of SHR

Variables	T1 (0.74<)	T2 (0.74–0.93)	T3 (> 0.93)	P-value
Sample size, n	1339	1339	1340	
Demography				
Age, years	57.47 ± 7.93	56.43 ± 8.21	57.29 ± 8.09	0.002
Sex				0.013
Women	423 (31.59%)	361 (26.96%)	420 (31.34%)	
Men	916 (68.41%)	978 (73.04%)	920 (68.66%)	
Current smoking	451 (33.68%)	492 (36.74%)	397 (29.63%)	< 0.001
Current drinking	313 (23.38%)	335 (25.02%)	278 (20.75%)	0.030
Heart rate, beats/min	79.84 ± 12.76	79.77 ± 13.00	82.61 ± 14.33	< 0.001
BMI, kg/m ²	26.49 ± 3.69	26.65 ± 3.61	26.18 ± 3.65	0.003
SBP, mmHg	141.48 ± 22.36	145.16 ± 23.43	149.49 ± 25.38	< 0.001
DBP, mmHg	84.81 ± 13.82	87.23 ± 14.52	88.45 ± 15.13	< 0.001
Previous history				
Hypertension	550 (41.08%)	535 (39.96%)	622 (46.42%)	0.001
Coronary artery disease	111 (8.29%)	87 (6.50%)	106 (7.91%)	0.181
Diabetes mellitus	265 (19.79%)	206 (15.38%)	361 (26.94%)	< 0.001
Previous haemorrhagic stroke	37 (2.76%)	34 (2.54%)	39 (2.91%)	0.839
Previous ischemic stroke	127 (9.48%)	99 (7.39%)	116 (8.66%)	0.149
Biochemical indexes				
WBC, 10 ⁹ /L	7.51 ± 2.23	7.60 ± 2.34	8.36 ± 2.66	< 0.001
RBC, 10 ¹² /L	4.77 ± 0.53	4.80 ± 0.51	4.76 ± 0.57	0.121
HB, g/L	143.61 ± 17.43	146.18 ± 17.02	146.43 ± 18.74	< 0.001
PLT, 10 ⁹ /L	246.81 ± 63.38	236.15 ± 61.75	235.12 ± 64.35	< 0.001
ALT, U/L	22.00 (16.00–33.00)	23.00 (16.50–33.00)	23.00 (16.00–33.00)	0.411
AST, U/L	19.00 (16.00–24.90)	20.00 (16.00–24.91)	20.00 (16.00–26.00)	0.194
Albumin/globulin ratio	1.44 ± 0.27	1.48 ± 0.27	1.42 ± 0.27	< 0.001
Serum creatinine, μmol/L	70.28 ± 27.02	71.51 ± 26.78	72.74 ± 30.74	0.078
Uric acid	319.68 ± 90.81	331.72 ± 92.18	321.81 ± 98.98	0.002
Serum potassium, mEq/L	3.85 ± 0.39	3.86 ± 0.41	3.88 ± 0.41	0.076
Serum sodium, mEq/L	140.33 ± 3.27	140.28 ± 3.11	139.30 ± 4.09	< 0.001
Total cholesterol, mmol/L	4.05 ± 1.07	4.23 ± 1.10	4.37 ± 1.14	< 0.001
Triglyceride, mmol/L	1.39 (1.04–1.92)	1.52 (1.10–2.13)	1.62 (1.13–2.45)	< 0.001
HDL-C, mmol/L	0.96 ± 0.25	0.99 ± 0.26	1.01 ± 0.30	< 0.001
LDL-C, mmol/L	2.40 ± 0.90	2.48 ± 0.91	2.52 ± 0.94	0.003
HbA1c, %	6.89 ± 1.71	6.57 ± 1.63	7.21 ± 2.13	< 0.001
Admission blood glucose, mmol/L	5.19 ± 1.57	6.47 ± 2.23	10.94 ± 5.70	< 0.001
Type of stroke, n (%)				0.007
Ischemic stroke	1031 (77.00%)	1043 (77.89%)	1018 (75.97%)	
Haemorrhagic stroke	308 (23.00%)	296 (22.11%)	322 (24.03%)	

Notes Data are mean (standard deviation), n (%), or median (interquartile range)

Abbreviations BMI, body mass index; SBP, systolic blood pressure; DBP, diastolic blood pressure; WBC, white blood cells; RBC, red blood cells; HB, hemoglobin; PLT, platelets; ALT, alanine aminotransferase; AST, aspartate aminotransferase; HDL-C, high-density lipoprotein cholesterol; LDL-C, low-density lipoprotein cholesterol; HbA1c, glycosylated hemoglobin

relationship between SHR and length of stay (p for non-linear association $p=0.017$) (Fig. 4).

Subgroup analysis

To investigate the potential interactions between SHR and related factors on in-hospital mortality, further stratified analyses were conducted (Fig. 5). None of the variables, including age, sex, current smoking, current

drinking, BMI, history of hypertension, history of diabetes mellitus, and history of prior stroke, significantly modified the relationship between SHR and in-hospital mortality (all p for interactions >0.05). We performed further stratified analyses to assess the relationship between SHR and length of stay in various subgroups (Fig. 6). However, no statistically significant interaction was observed.

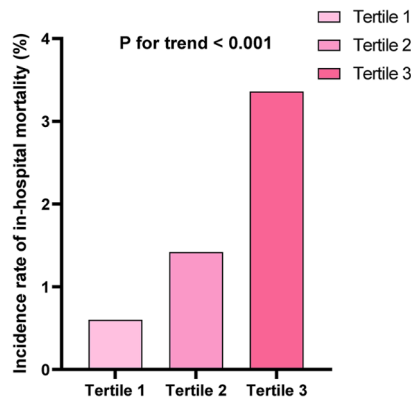


Fig. 1 Incidence of in-hospital mortality according to the tertiles of SHR

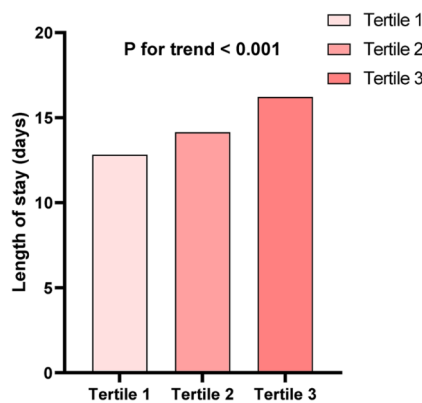


Fig. 2 Length of stay according to the tertiles of SHR

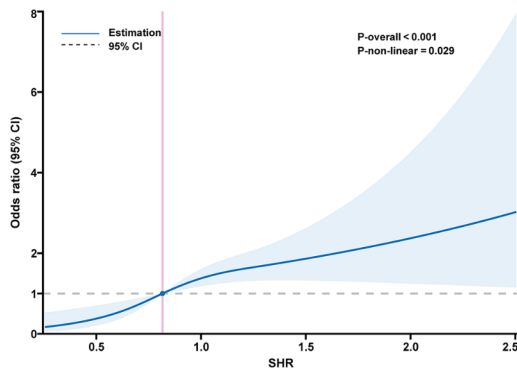


Fig. 3 Restricted cubic spline for the association between SHR and in-hospital mortality in patients with acute stroke

ROC analysis

According to ROC analysis, SHR [area under the curve (AUC)=0.693] was a stronger predictor of in-hospital mortality in all stroke patients than ABG (AUC=0.646) and HbA1c (AUC=0.523) (Fig. 7A). Comparable outcomes were obtained in patients with acute IS (Fig. 7B) and HS (Fig. 7C).

Table 2 Associations of SHR and in-hospital mortality in patients with acute stroke

Exposure	Crude model	Model 1	Model 2	Model 3
	Odds ratio (95% CI)	Odds ratio (95% CI)	Odds ratio (95% CI)	Odds ratio (95% CI)
Continuous (per 1-SD increase)	1.53 (1.32, 1.77)	1.43 (1.23, 1.68)	1.31 (1.10, 1.55)	1.26 (1.05, 1.52)
SHR median				
≤ 0.81	Reference	Reference	Reference	Reference
> 0.81	3.57 (2.04, 6.25)	3.12 (1.77, 5.51)	2.72 (1.51, 4.90)	2.48 (1.37, 4.50)
SHR tertiles				
T1 (0.74<)	Reference	Reference	Reference	Reference
T2 (0.74–0.93)	2.39 (1.04, 5.49)	2.39 (1.04, 5.50)	2.40 (1.03, 5.58)	2.28 (0.98, 5.33)
T3 (>0.93)	5.78 (2.72, 12.31)	5.00 (2.33, 10.73)	4.34 (1.98, 9.52)	3.89 (1.76, 8.62)
P for trend	<0.001	<0.001	<0.001	<0.001

Model 1: adjusted for age, sex, smoking status, alcohol consumption, heart rate, BMI, SBP, and DBP

Model 2: adjusted for variables in Model 1+WBC, RBC, HB, PLT, triglyceride, HDL-C, LDL-C, HbA1c, ALT, AST, GGT, albumin/globulin ratio, Scr, BUN, UA, potassium, and sodium

Model 3: adjusted for variables in Model 2+hypertension, coronary artery disease, diabetes mellitus, cancer, previous haemorrhagic stroke, and previous ischemic stroke

Abbreviations SD=standard deviation. Other abbreviations, see Table 1

Discussion

This is the first study to examine the relationship between SHR and in-hospital mortality and length of stay in stroke patients. The current study has two major findings. First, among stroke patients, those with high SHR had higher in-hospital mortality and length of stay. Second, SHR is independently associated with in-hospital mortality and length of stay in ischemic and hemorrhagic stroke patients.

The study determined that the SHR is a more effective quantitative indicator for stress hyperglycemia than blood glucose levels when assessing critical illness outcomes¹¹. Previous research has demonstrated a negative correlation between stress hyperglycemia and poor prognosis in patients with acute myocardial infarction [22–24]. P. A. O’Neill et al. have previously determined the stress hormone and blood glucose response after acute stroke and found that irritability and blood glucose increases in non-diabetic patients are signs of a poor prognosis after stroke [25]. A recent meta-analysis demonstrated that higher SHR levels significantly increase the rates of poor prognosis, mortality, neurologic deficits, hypertension, and infectious complications, regardless of diabetes or whether patients underwent intravenous thrombolysis or mechanical thrombectomy [26]. In a prospective study, Konstantinos Tziomalos et al. discovered that stress hyperglycemia is linked to more

Table 3 Associations of SHR and length of hospital stay in patients with acute stroke

Exposure	Crude model	Model 1	Model 2	Model 3
	β (95% CI)	β (95% CI)	β (95% CI)	β (95% CI)
Continuous (per 1-SD increase)	0.83 (0.55, 1.12)	0.77 (0.48, 1.06)	0.72 (0.43, 1.01)	0.70 (0.40, 1.00)
SHR median				
≤ 0.81	Reference	Reference	Reference	Reference
> 0.81	1.35 (0.77, 1.92)	1.20 (0.62, 1.78)	1.08 (0.50, 1.65)	0.92 (0.33, 1.50)
SHR tertiles				
T1 (0.74<)	Reference	Reference	Reference	Reference
T2 (0.74–0.93)	0.32 (-0.38, 1.03)	0.15 (-0.55, 0.86)	0.20 (-0.51, 0.90)	0.37 (-0.32, 1.06)
T3 (> 0.93)	1.40 (0.70, 2.11)	1.19 (0.48, 1.91)	1.08 (0.37, 1.79)	0.84 (0.12, 1.56)
P for trend	< 0.001	0.001	0.003	0.022

Model 1: adjusted for age, sex, smoking status, alcohol consumption, heart rate, BMI, and DBP

Model 2: adjusted for variables in Model 1 + WBC, RBC, HB, PLT, triglyceride, HDL-C, LDL-C, HbA1c, ALT, AST, GGT, albumin/globulin ratio, Scr, BUN, UA, potassium, and sodium

Model 3: adjusted for variables in Model 2 + hypertension, coronary artery disease, diabetes mellitus, cancer, previous haemorrhagic stroke, and previous ischemic stroke

Abbreviations SD=standard deviation. Other abbreviations, see Table 1

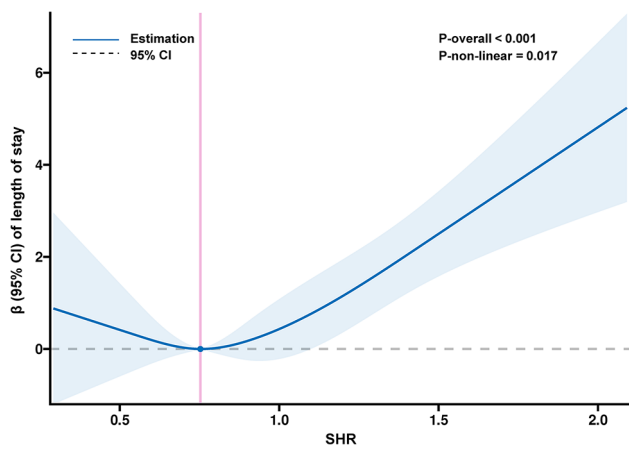


Fig. 4 Restricted cubic spline for the association between SHR and length of hospital stay in patients with acute stroke

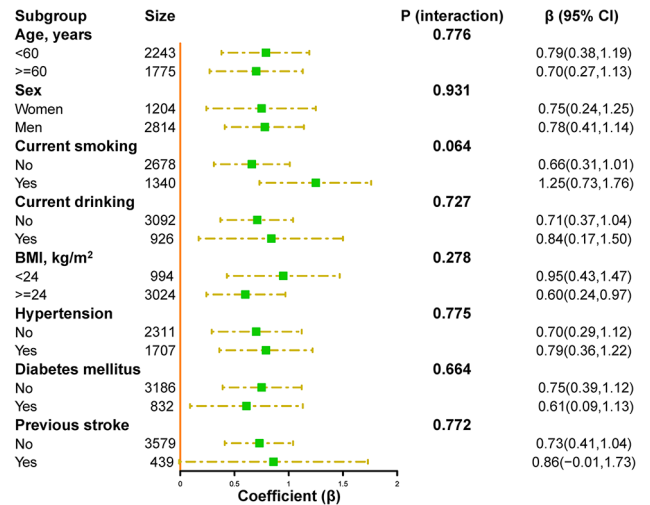


Fig. 6 Stratified analyses of the association between SHR (per SD increment) and length of hospital stay in patients with acute stroke

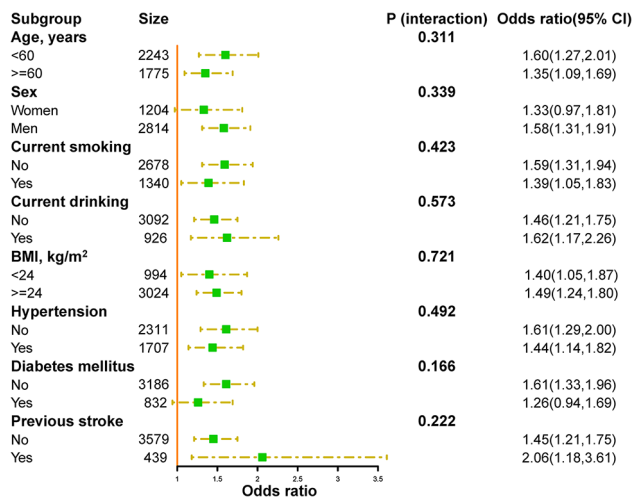


Fig. 5 Stratified analyses of the association between SHR (per SD increment) and in-hospital mortality in patients with acute stroke

severe acute IS and that such patients had more adverse functional outcomes and higher in-hospital mortality at discharge¹³. These findings suggest that SHR could be a significant factor in patient prioritizing and a valid biomarker for predicting in-hospital mortality in stroke populations. Acute hyperglycemia following a stroke might be a risk factor for mortality since poor glycemic control seems to be linked to post-stroke dysfunction. Cao et al. found that hyperglycemia can enhance brain damage through multiple mechanisms, prolong length of hospital stay, increase recurrence and mortality rates, and negatively impact prognosis [27]. Other studies have also shown that the longer critically ill patients stay in the emergency department, the higher their morbidity and mortality rates [28]. Therefore, early identification of novel risk factors during the early stages of cerebral infarction and the implementation of hypoglycemic

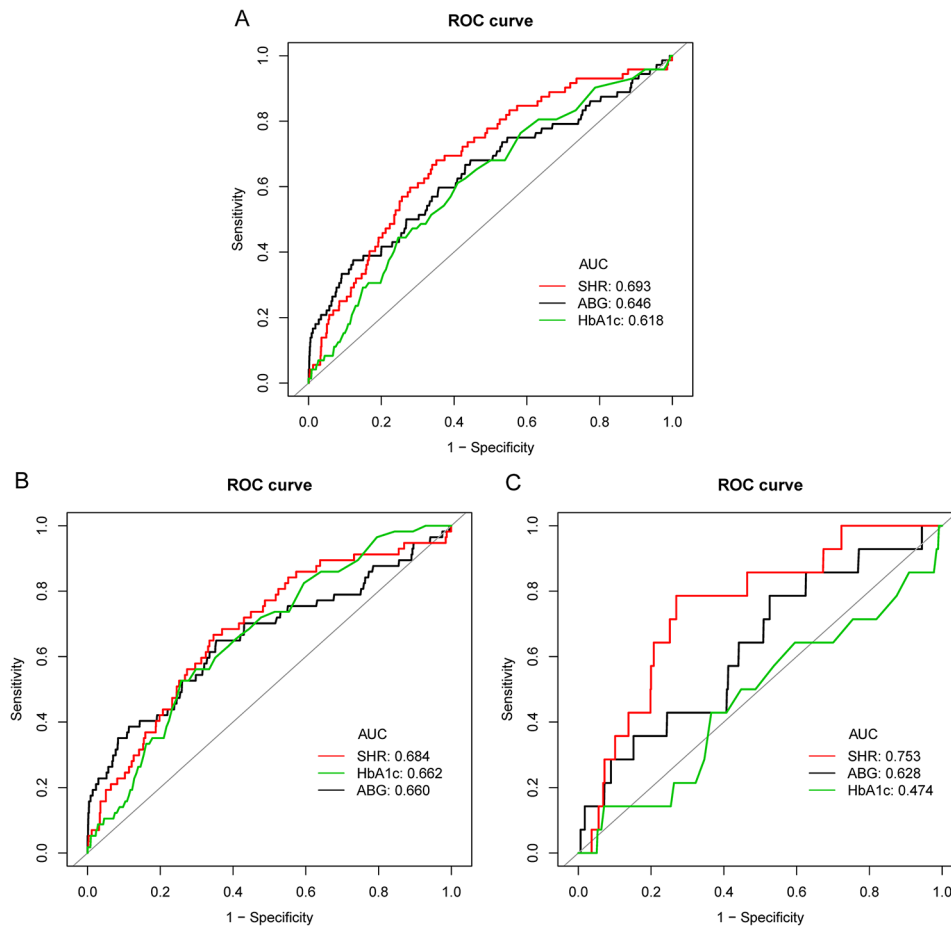


Fig. 7 Receiver operating characteristic (ROC) analysis of SHR, admission glucose, and HbA1c for predicting in-hospital mortality. **A:** In patients with acute stroke; **B:** In patients with acute ischemic stroke; **C:** In patients with acute haemorrhagic stroke

treatments are critical to reducing the harmful consequences of hyperglycemia.

Several potential mechanisms may account for the observed associations. First, stress hyperglycemia might be involved in the production of molecules that are inflammatory and vasoconstrictive, aggravating the oxidative stress that follows, causing mitochondrial malfunction, and results in endothelial dysfunction [29–31]. Second, hyperglycemia also activates protein kinase C and NADPH oxidase, increasing reactive oxygen species (ROS) levels and reducing nitric oxide synthase, which cause decreased reperfusion and aggravate more neurons to be injured [32]. Third, patients with acute IS often suffer from lipid metabolism disorders. Under the high blood sugar situation, macrophages swallow the glycated LDL, which will be transformed into foam cells, adhering to the blood vessel wall, thus contributing to the overlapping interaction of lipotoxicity, glucotoxicity, and inflammation, and causing poor clinical outcomes [33]. Finally, hyperglycemia may be directly neurotoxic to the ischemic penumbra, causing more neurons to be damaged. This might then cause hypoperfused at-risk tissue to infarct,

thus resulting in poorer stroke outcome [34–36]. This would also indicate that SHR was a target for treatment in an attempt to alleviate the dismal prognosis associated with stroke.

Strengths and limitations

Our study has several strengths, including its large sample size, consistent data collection methods, and comprehensive information on potential confounders. The study, however, is not without limitations. First, as this is a retrospective, single-center investigation, further patient cohorts need to be used to confirm our findings. Second, a direct causal relationship cannot be inferred due to the study's design. Third, the study failed to gather data on the hypoglycemic treatment administered to the participants, thereby preventing the assessment of any additional correlations between SHR and the hypoglycemic treatment. Fourth, since SHR was only measured at one moment in time, we were unable to account for variations in SHR over time, which could possibly affect in-hospital mortality. Fifth, we did not collect data on enteral nutrition, corticosteroids, or other interventions

that might affect in-hospital mortality. Sixth, due to the absence of baseline scores from the National Institutes of Health Stroke Scale (NIHSS) and the Glasgow Coma Scale (GCS) in our dataset, our analysis could not ascertain the influence of SHR on NIHSS and GCS scores.

Conclusion

This study demonstrated that SHR was associated with increased in-hospital mortality and prolonged length of stay in stroke patients. Thus, more research is necessary to validate our results.

Abbreviations

SHR	Stress hyperglycemia ratio
ROC	Receiver operating characteristic
AUC	Area under the ROC curve
SD	Standard deviation
OR	Odds ratio
CI	Confidence interval
HbA1c	Glycosylated hemoglobin
ABG	Admission blood glucose
IS	Ischemic stroke
HS	Hemorrhagic stroke
CT	Cranial computed tomography
MRI	Magnetic resonance imaging
BMI	Body mass index
WBC	White blood cells
HB	Hemoglobin
RBC	Red blood cells
PLT	Platelets
ALT	Alanine aminotransferase
AST	Aspartate aminotransferase
A/G	Albumin/globulin ratio
Scr	Serum creatinine
UA	Uric acid
TC	Total cholesterol
TG	Triglycerides
HDL-C	High-density lipoprotein cholesterol
LDL-C	Low-density lipoprotein cholesterol
ICD-10	International Classification of Diseases, Tenth Revision
VIF	Variance inflation factor
RCS	Restricted cubic spline

Supplementary Information

The online version contains supplementary material available at <https://doi.org/10.1186/s13098-024-01303-1>.

Supplementary Material 1

Acknowledgements

All authors would like to thank all collaborators of this study.

Author contributions

SD, CXT, LNF designed the study. SD, CXT analysed the data and wrote the manuscript and edited the manuscript. LNF, ZQ, HM substantially revised the manuscript. HJL, SSW, YWB, HJ collected data. All authors reviewed the manuscript.

Funding

This work was sponsored by the Department of Science and Technology, Xinjiang Uygur Autonomous Region (No. 2022D01C836).

Data availability

The datasets used and/or analyzed in the current study are available from the corresponding author upon reasonable request.

Declarations

Ethics approval and consent to participate

The study procedures were carried out by the Declaration of Helsinki. Approval was obtained from the Ethical Committee of People's Hospital of Xinjiang Uygur Autonomous Region.

Consent for publication

Not applicable.

Competing interests

The authors declare no competing interests.

Received: 22 November 2023 / Accepted: 4 March 2024

Published online: 16 March 2024

References

1. Zhou M, Wang H, Zhu J, Chen W, Wang L, Liu S, Li Y, Wang L, Liu Y, Yin P, et al. Cause-specific mortality for 240 causes in China during 1990–2013: a systematic subnational analysis for the global burden of Disease Study 2013. *Lancet*. 2016;387(10015):251–72.
2. Feigin VL, Forouzanfar MH, Krishnamurthi R, Mensah GA, Connor M, Bennett DA, Moran AE, Sacco RL, Anderson L, Truelsen T, et al. Global and regional burden of stroke during 1990–2010: findings from the global burden of Disease Study 2010. *Lancet*. 2014;383(9913):245–54.
3. Moran A, Zhao D, Gu D, Coxson P, Chen CS, Cheng J, Liu J, He J, Goldman L. The future impact of population growth and aging on coronary heart disease in China: projections from the Coronary Heart Disease Policy Model-China. *BMC Public Health*. 2008;8:394.
4. Cai X, Hu J, Wen W, Wang M, Zhu Q, Liu S, Yang W, Dang Y, Hong J, Li N. Association between the geriatric nutritional risk index and the risk of stroke in elderly patients with hypertension: a longitudinal and cohort study. *Front Nutr*. 2022;9:1048206.
5. Tu WJ, Wang LD. China stroke surveillance report 2021. *Mil Med Res*. 2023;10(1):33.
6. Cai X, Hu J, Zhu Q, Wang M, Liu S, Dang Y, Hong J, Li N. Relationship of the metabolic score for insulin resistance and the risk of stroke in patients with hypertension: a cohort study. *Front Endocrinol (Lausanne)*. 2022;13:1049211.
7. Melamed E. Reactive hyperglycaemia in patients with acute stroke. *J Neurol Sci*. 1976;29(2–4):267–75.
8. Pan Y, Cai X, Jing J, Meng X, Li H, Wang Y, Zhao X, Liu L, Wang D, Johnston SC, et al. Stress hyperglycemia and prognosis of minor ischemic stroke and transient ischemic attack: the CHANCE study (clopidogrel in high-risk patients with Acute Nondisabling cerebrovascular events). *Stroke*. 2017;48(11):3006–11.
9. Zhu B, Pan Y, Jing J, Meng X, Zhao X, Liu L, Wang Y, Wang Y, Wang Z. Stress hyperglycemia and outcome of non-diabetic patients after Acute ischemic stroke. *Front Neurol*. 2019;10:1003.
10. Rawshani A, Rawshani A, Franzén S, Sattar N, Eliasson B, Svensson AM, Zethelius B, Miftaraj M, McGuire DK, Rosengren A, et al. Risk factors, mortality, and Cardiovascular outcomes in patients with type 2 diabetes. *N Engl J Med*. 2018;379(7):633–44.
11. Dong N, Shen X, Wu X, Guo X, Fang Q. Elevated glycated hemoglobin levels are Associated with Poor Outcome in Acute ischemic stroke. *Front Aging Neurosci*. 2021;13:821336.
12. Xu W, Song Q, Wang X, Zhao Z, Meng X, Xia C, Xie Y, Yang C, Guo Y, Zhang Y, et al. Association of stress hyperglycemia ratio and in-hospital mortality in patients with coronary artery disease: insights from a large cohort study. *Cardiovasc Diabetol*. 2022;21(1):217.
13. Roberts GW, Quinn SJ, Valentine N, Alhawassi T, O'Dea H, Stranks SN, Burt MG, Doogue MP. Relative hyperglycemia, a marker of critical illness: introducing the stress hyperglycemia ratio. *J Clin Endocrinol Metab*. 2015;100(12):4490–7.
14. Abdu FA, Galip J, Qi P, Zhang W, Mohammed AQ, Liu L, Yin G, Mohammed AA, Mareai RM, Jiang R, et al. Association of stress hyperglycemia ratio and poor long-term prognosis in patients with myocardial infarction with non-obstructive coronary arteries. *Cardiovasc Diabetol*. 2023;22(1):11.
15. Mi D, Li Z, Gu H, Jiang Y, Zhao X, Wang Y, Wang Y. Stress hyperglycemia is associated with in-hospital mortality in patients with diabetes and acute ischemic stroke. *CNS Neurosci Ther*. 2022;28(3):372–81.

16. Chu H, Huang C, Tang Y, Dong Q, Guo Q. The stress hyperglycemia ratio predicts early hematoma expansion and poor outcomes in patients with spontaneous intracerebral hemorrhage. *Ther Adv Neurol Disord*. 2022;15:17562864211070681.
17. Zhou Q, Yang J, Wang W, Shao C, Hua X, Tang YD. The impact of the stress hyperglycemia ratio on mortality and rehospitalization rate in patients with acute decompensated heart failure and diabetes. *Cardiovasc Diabetol*. 2023;22(1):189.
18. Nordström P, Gustafson Y, Michaëlsson K, Nordström A. Length of hospital stay after hip fracture and short term risk of death after discharge: a total cohort study in Sweden. *BMJ*. 2015;350:h696.
19. von Elm E, Altman DG, Egger M, Pocock SJ, Gøtzsche PC, Vandenbroucke JP. The strengthening the reporting of Observational studies in Epidemiology (STROBE) Statement: guidelines for reporting observational studies. *Int J Surg*. 2014;12(12):1495–9.
20. Stroke–1989. Recommendations on stroke prevention, diagnosis, and therapy. Report of the WHO Task Force on Stroke and other Cerebrovascular disorders. *Stroke*. 1989;20(10):1407–31.
21. The international conference for the tenth revision of the International Classification of Diseases. Strengthening of Epidemiological and Statistical Services Unit. World Health Organization, Geneva. *World Health Stat Q* 1990, 43(4):204–245.
22. Egi M, Bellomo R, Stachowski E, French CJ, Hart GK, Hegarty C, Bailey M. Blood glucose concentration and outcome of critical illness: the impact of diabetes. *Crit Care Med*. 2008;36(8):2249–55.
23. Rady MY, Johnson DJ, Patel BM, Larson JS, Helmers RA. Influence of individual characteristics on outcome of glycemic control in intensive care unit patients with or without diabetes mellitus. *Mayo Clin Proc*. 2005;80(12):1558–67.
24. Kerby JD, Griffin RL, MacLennan P, Rue LW 3rd. Stress-induced hyperglycemia, not diabetic hyperglycemia, is associated with higher mortality in trauma. *Ann Surg*. 2012;256(3):446–52.
25. O'Neill PA, Davies I, Fullerton KJ, Bennett D. Stress hormone and blood glucose response following acute stroke in the elderly. *Stroke*. 1991;22(7):842–7.
26. Williams SB, Goldfine AB, Timimi FK, Ting HH, Roddy MA, Simonson DC, Creager MA. Acute hyperglycemia attenuates endothelium-dependent vasodilation in humans in vivo. *Circulation*. 1998;97(17):1695–701.
27. Cao Y, Wang F, Cheng Q, Jiao X, Lv X. Fasting blood glucose levels affect hospitalization time and relapse and mortality rates of cerebral infarction patients. *Int J Clin Exp Med*. 2015;8(7):11508–13.
28. Stey AM, Kanzaria HK, Dudley RA, Bilimoria KY, Knudson MM, Callcut RA. Emergency Department Length of Stay and Mortality in critically injured patients. *J Intensive Care Med*. 2022;37(2):278–87.
29. Dungan KM, Braithwaite SS, Preiser JC. Stress hyperglycaemia. *Lancet*. 2009;373(9677):1798–807.
30. Worthley MI, Holmes AS, Willoughby SR, Kucia AM, Heresztyn T, Stewart S, Chirkov YY, Zeitz CJ, Horowitz JD. The deleterious effects of hyperglycemia on platelet function in diabetic patients with acute coronary syndromes mediated by superoxide production, resolution with intensive insulin administration. *J Am Coll Cardiol*. 2007;49(3):304–10.
31. Ray KK, Cannon CP, Morrow DA, Kirtane AJ, Buros J, Rifai N, McCabe CH, Gibson CM, Braunwald E. Synergistic relationship between hyperglycaemia and inflammation with respect to clinical outcomes in non-ST-elevation acute coronary syndromes: analyses from OPUS-TIMI 16 and TACTICS-TIMI 18. *Eur Heart J*. 2007;28(7):806–13.
32. Kruyt ND, Biessels GJ, Devries JH, Roos YB. Hyperglycemia in acute ischemic stroke: pathophysiology and clinical management. *Nat Rev Neurol*. 2010;6(3):145–55.
33. Chen G, Ren J, Huang H, Shen J, Yang C, Hu J, Pan W, Sun F, Zhou X, Zeng T, et al. Admission Random Blood glucose, fasting blood glucose, stress hyperglycemia ratio, and functional outcomes in patients with Acute ischemic stroke treated with intravenous thrombolysis. *Front Aging Neurosci*. 2022;14:782282.
34. Rosso C, Pires C, Corvol JC, Baronnet F, Crozier S, Leger A, Deltour S, Valabregue R, Amor-Sahli M, Lehericy S, et al. Hyperglycaemia, insulin therapy and critical penumbral regions for prognosis in acute stroke: further insights from the INSULINFARCT trial. *PLoS ONE*. 2015;10(3):e0120230.
35. Parsons MW, Barber PA, Desmond PM, Baird TA, Darby DG, Byrnes G, Tress BM, Davis SM. Acute hyperglycemia adversely affects stroke outcome: a magnetic resonance imaging and spectroscopy study. *Ann Neurol*. 2002;52(1):20–8.
36. Luitse MJ, van Seeters T, Horsch AD, Kool HA, Velthuis BK, Kappelle LJ, Biesseles GJ. Admission hyperglycaemia and cerebral perfusion deficits in acute ischaemic stroke. *Cerebrovasc Dis*. 2013;35(2):163–7.

Publisher's Note

Springer Nature remains neutral with regard to jurisdictional claims in published maps and institutional affiliations.